



# OIL & GAS

S E R V I C E S

O U R C O R P O R A T E P R O F I L E

# WE ARE

**Ashbard Energy Company Limited.** We offer expert support services designed with cost effective structures to adequately facilitate clients operations for continuous performance. We are committed to remaining a strong and efficient partner in the field striving beyond the local paradigm at every engagement to fulfill our roles for project success.

**Adewale Adelaja. MD/CEO**

## MISSION & VISION

As a company our **MISSION** is To deliver outstanding quality service to all our clients through strategic expert solutions using the safest and most cost effective means with a **VISION** to Be the choice provider of efficient technology focused support services and ancillary products in the industry

## CORPORATE OVERVIEW

Incorporated in 2004, Ashbard Energy Company Limited is an indigenous engineering services provider.

Our expertise spans across oil & gas, electricity & power, procurement solutions and technical manpower services

## CORPORATE VALUES

- ✓ Customer satisfaction
- ✓ Integrity & commitment
- ✓ QHSE
- ✓ Truth & mutual respect
- ✓ Continuous Improvement
- ✓ Value Creation
- ✓ Team Work & Workforce Diversity





## CERTIFICATE

*This is to certify that the  
Environmental Management System of*

**ASHBARD ENERGY COMPANY LIMITED**  
NO. 18, CHIEF NWUKE STREET, TRANS AMADI INDUSTRIAL LAYOUT,  
PORT HARCOURT, RIVERS STATE

*has been assessed and found to conform to the requirements of*

### ISO 14001:2015

*This Certificate is valid for the following scope:*

**Supply, Maintenance & Repair of Valves (Pressure Safety Valves PSV & Control Valves), Non Destructive Testing (Conventional & Advanced), Well Services (Slickline, Gyro, Surface Well Testing, Early Production Facility -EPF, E- Wireline), Corrosion Monitoring Services, Calibration Services, Provision of Technical Manpower and Procurement Services.**

Certificate No.	:BQSR13577
Registration Date	:29/01/2022
Issue Date	:02/02/2022
Expiry Date	:28/01/2025
Recertification Date	:28/01/2025



*Shame*

Director

**BQSR QUALITY ASSURANCE PVT LTD.**

Key Location: 183 Broadway, Ste 210 Hicksville, New York NY 11801, USA.  
Operations Office: D-308, 104-108, Nisarg Plaza, Valsad, Pune - 411007. | Web: [www.bqsr.com](http://www.bqsr.com)  
Accredited by IAS (0290 Saharn Street, Suite 100, Bran, California 94891 U.S.A.)



For verification and updated information concerning the present certificate, please visit [www.bqsr.com](http://www.bqsr.com). The Certificate is valid for period of 3 years subject to satisfactory annual surveillance audit. This Certificate is the property of BQSR Quality Assurance Pvt Ltd. It shall be returned immediately when demanded.

## WHO WE ARE

**A 100% Nigerian company, registered and prequalified with the Nigerian Content Development & Monitoring Board (NCDMB) We are prequalified on the NIPEX portal with about 30 service/product codes showcasing our capability and readiness to work and provide these services.**

# OUR SERVICES

03

1

**Well Services (Well Testing, Slickline, Dewaxing, E-wireline, DST, TCP, Coiled Tubing, Well Stimulation & Gyro Services, Wireless Permanent Downhole Gauges Supply, Installation and Support Services))**

2

**Valves Supply, Repair And Maintenance**

3

**Non Destructive Testing Services (NDT)**

4

**Calibration/instrumentation (valves, Sensors, Pressure Gauges, Level Gauges, Basic Data Measurement**

5

**Tank Cleaning & Rehabilitation**

6

**Intelligent Pigging / Pipeline Support**

7

**Procurement Solutions**

8

**Technical Manpower Services**

9

**Rig Provision Services**

10

**Drilling Tools And Equipment**

# WELL SERVICES

- E-WIRELINE
- SLICKLINE
- WIRELESS PERMANENT DOWNHOLE GAUGES
- WELL TESTING
- DST, TCP
- NORTH SEEKING GYRO
- DEWAXING
- COILED TUBING
- WELL STIMULATION



# E-LINE SERVICES

*PNN / PNN Plus – pulse neutron  
neutron - (cased hole reservoir  
saturation tool)*

- *Flagship product*
- *Over 10,000 wells logged since 1998*
- *More than 150 tools in service worldwide*
- *30 wells logged successfully in Niger Delta*
- *Measure long and short thermal neutrons and far and near activation gamma*
- *Estimate water saturation, compensated neutron porosity,*
- *Remaining oil and gas reserve and oil-water,*
- *Fluid contact locations.*
- *Application for gravel pack evaluation*
- *Low salinity tool, less than 4000ppm.*
- *Application in unknown water salinity reservoirs*
- *Application for activation flow log (flow behind casing) evaluation.*
- *Replace Open hole Triple-combo logging services*
- *Max Logging speed - 4m/min*
- *Ultra High Temperature Tool: 400 o F, 200 o C'.*



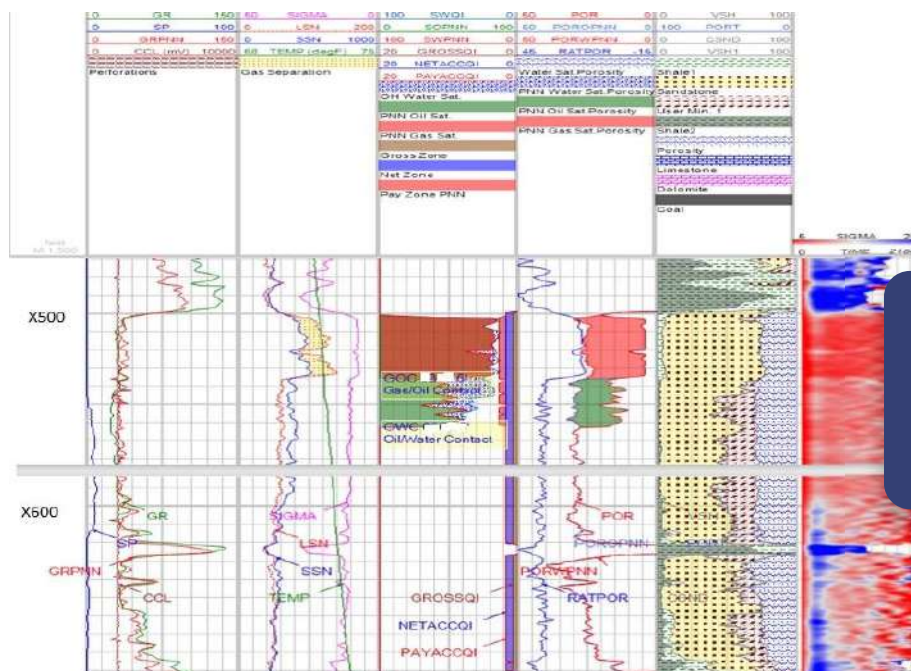
05

*pnnPlus*

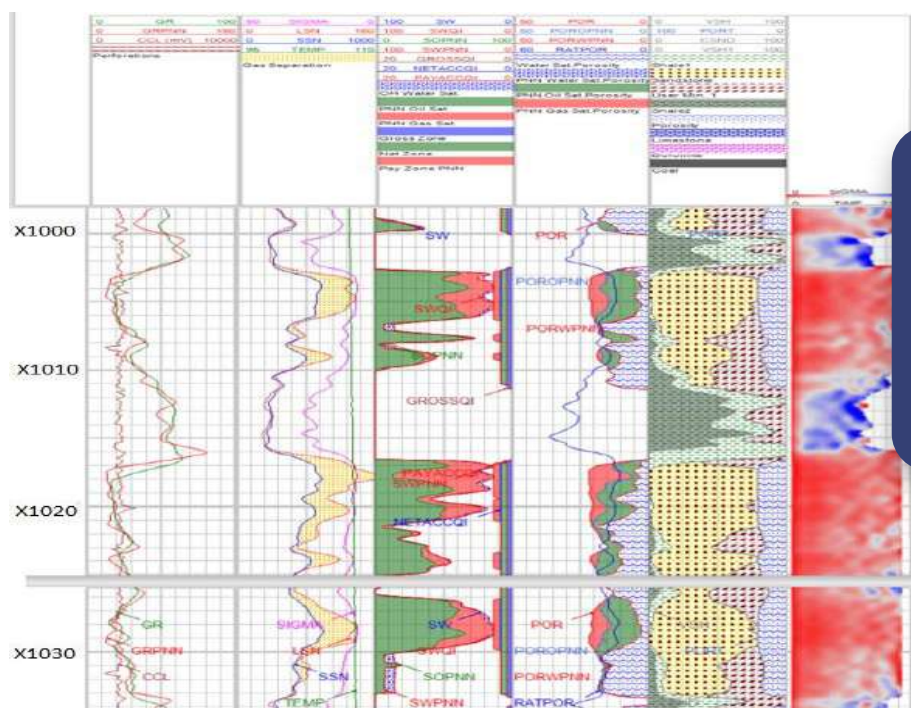


**Well Logging Equipment**

## » Log Analysis/case Studies



Niger-delta case study showing clear fluid contacts.



Niger-delta case study showing gas condensate which was confirmed by operator after perforation



# WELL INTEGRITY

**Ashbard offers high quality well integrity survey for various downhole conditions. Tools are available in different sizes, can be deployed in SRO/Memory modes and combinable for a comprehensive well assessment.**

- **Radial Bond Tool**
- **Multifinger Caliper**
- **EMDS (Corrosion Tool)**
- **Dual Spectral Noise Tool**



## DUAL SPECTRAL NOISE TOOL DNST

### DESCRIPTION

The Dual Spectral Noise Tool (DNST) is used to detect the incoming noises in the wellbore generated at different spectral frequencies from different sources. By analyzing the frequency spectrum, the nature of fluids may be determined and leaks can be located. Dual receivers allow the tool to reduce the effect of road noise while logging and also provide redundancy for stop checks.

Noise logging is applicable to oil/gas/water wells. It increases the success rate of locating leaks and channeling in tubulars. When combined with temperature and flowrate measurements, extensive quantitative interpretation can be performed.

Real time monitoring combined with the ability to save the audio to digital file provides ability to meet greater compliance regulations.

### APPLICATIONS

- ▣ Location of production interval and productivity evaluation
- ▣ Fluid identification and flow rate evaluation
- ▣ Inspection of the channeling behind casing, leaks, backflows, sand production, and effect of packers

### SPECIFICATIONS

PROTOCOL	GDTbus
DIAMETER	1-11/16" (43mm)
MAX. TEMPERATURE	350°F (175°C)
MAX. PRESSURE	20,000psi (140MPa)
LENGTH	33.29" (846mm)
MATERIALS	H2S Tolerant
LOGGING SPEED	15 ft/min (300m/hr)
WEIGHT	30lb (13.7kg)
OPERATING FREQUENCY	100Hz - 12.7KHz
FREQUENCY RESOLUTION	100Hz
AUDIO OUTPUT FORMAT	MP3



# PRODUCTION LOGGING TOOLS

## PLT Suite

### SPECIFICATIONS

- O.D. 1-11/16"
- Pressure Rating 15,000 PSI
- Temp. Rating 175C (350F)

### Applications

- Type of fluid flow in pipe,
- Fluid entry (exit),
- Behind pipe flow detection,
- Presence of sand detection &
- Appropriate flow rate (gas) determination
- Analyze production/injection profiles by zone



**Port Harcourt:** 18a Chief Nwuke Street, Trans Amadi, Ind Layout PHC. Rivers State, Nigeria.

**Lagos:** 3rd Floor Mulliner Towers 29 Alfred Rewane Road Ikoyi, Lagos State Nigeria.

info@ashbardenergy.com, businessdevelopment@ashbardenergy.com

www.ashbardenergy.com: Tel: 08036742534, 09081438222, 09081402333

# WELL STIMULATION (PETROBOOST)

# 09

Petroboost® technology is the result of two decades of Research & Development. It commenced with research into combustion mechanisms and problems of hydrogen energy.

**Well output increase is driven by:** Active physical and chemical action in the uncovered formation zone of high-energy compounds where combustive and oxidizing mixtures are being generated; Applying action of gases that are facing the payzone (Hydrogen) produced during the reaction, heat and new chemical effects. A process of In-situ hydrocracking breakdown of hydrocarbons occurs around the reaction zone.

## Features

- ✓ *Eco- friendly chemicals*
- ✓ *Initiation of micro fracture network creation in the reservoir*
- ✓ *Short term cracking pyrolysis of heavy components of oil ( paraffin , asphaltene, resin, e.t.c*
- ✓ *Standard work over equipment is used*
- ✓ *Petroboost operation requires 2-3 days maximum*
- ✓ *Long lasting effect*
- ✓ *The petroboost method efficiency is proved by more than 550 wells operations*
- ✓ *The petroboost method can be adopted to different reservoir conditions*
- ✓ *Permeability increase*
- ✓ *Recoverability factor increase*

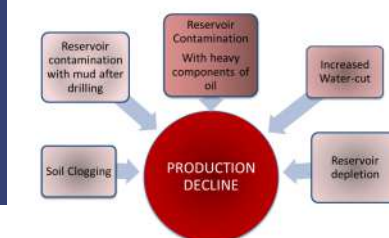
## Benefits

- ✓ *Additional Fracturing*
- ✓ *Opening of the closed pore space*
- ✓ *Oil wells productivity increase by 1.5-10 times, gas wells by 3-15 times*
- ✓ *Skin – effects reduction*
- ✓ *Permeability increase*
- ✓ *Rock consolidation*
- ✓ *Extension of workover interval*
- ✓ *Minimize expenses with unique cost effective EOR technology*

## Stimulation

### Technologies:

- ✓ *Hydraulic Fracturing*
- ✓ *Acid Treatment*
- ✓ *Alkali treatment*
- ✓ *Thermal Stimulation*
- ✓ *Others*



## Applications

- ✓ *Petroboost Method can be applied for vertical, deviated and horizontal wells*
- ✓ *Oil, Gas and gas condensate wells*
- ✓ *Existing (producing) wells and wells for activation after drilling*
- ✓ *Can be adopted for all rock-types*
- ✓ *Onshore and offshore operations, no limitation in climate conditions*

## Challenge

- ✓ *Activation of a new drilled well. Solving the problem of mud contamination*
- ✓ *Production enhancement for heavy oil well*
- ✓ *Improvement of permeability in tight reservoirs*
- ✓ *In situ fluid mobility increase*
- ✓ *Bringing the well on to commercial production mode (depleted and mature fields)*

**Port Harcourt:** 18a Chief Nwuke Street, Trans Amadi, Ind Layout PHC. Rivers State, Nigeria.

**Lagos:** 3rd Floor Mulliner Towers 29 Alfred Rewane Road Ikoyi, Lagos State Nigeria.

info@ashbardenergy.com, businessdevelopment@ashbardenergy.com

www.ashbardenergy.com: Tel: 08036742534, 09081438222, 09081402333



# SLICKLINE

Ashbard Energy provides slickline services ranging from basic operations, completions, interventions to more advanced slickline services. We have our fleet of Slickline skid units and trucks for your operations. Our services include but not limited to the following:

- Tubing Drift
- BHP Survey / Zone Change out
- Tubing Broach/Plunger installation
- Paraffin/Wax Cutting/Swabbing/Sand Bail
- Gas lift Changeout
- Fishing Operations
- Memory logging services  
(Well integrity Suite – Corrosion, Leak detection, Cement evaluation, Caliper and Gyro Services)
- Plug setting and pulling, etc.



**Port Harcourt:** 18a Chief Nwuke Street, Trans Amadi, Ind Layout PHC. Rivers State, Nigeria.

**Lagos:** 3rd Floor Mulliner Towers 29 Alfred Rewane Road Ikoyi, Lagos State Nigeria.

[info@ashbardenergy.com](mailto:info@ashbardenergy.com), [businessdevelopment@ashbardenergy.com](mailto:businessdevelopment@ashbardenergy.com)

[www.ashbardenergy.com](http://www.ashbardenergy.com): **Tel:** 08036742534, 09081438222, 09081402333



# WIRELESS PRODUCTION MONITORING SYSTEM

- **Retrofit gauge installation**
- **Drill Stem Testing**
- **Permanent downhole gauge replacement**
- **Intelligent Completion Monitoring**
- **Multizone Injection Monitoring**
- **World's first practical, wireless production monitoring system**
- **Measures pressure, temperature, and flow rate!**
- **Novel downhole telemetry requires no repeaters!**
- **Solar powered surface system brings secure well data to your Smart devices**

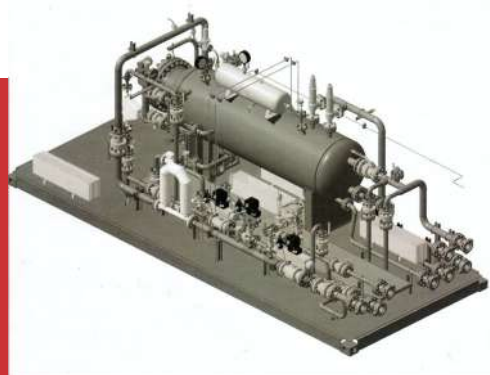


# WELL TESTING

# 12

Ashbard provides well testing services in partnership with renowned technical partners, we have modern well testing equipment and tools which are readily available to be deployed to site. We in ASHBARD pride ourselves in delivering custom solutions to meet the testing needs of our customers in the industry.

- SURFACE WELL TESTING
- EPF
- DRILL STEM TESTING (DST)
- TUBULAR CONVEYING PERFORATION (TCP)



Ashbard in partnership with OEM provide EPF as an effective solution for operating companies to bring their new discoveries on-stream fast and generate an early cash flow. Facility can be both mobile design or skid design

1. PRODUCTION WELLS CLUSTER
2. MEASUREMENT AND ADJUSTMENT MODULE
3. OIL/CONDENSATE LOADING
4. PRODUCED WATER LOADING

## PLANT COMPOSITION:

- Oil and gas separator (OGS);
- Water separation tank (WSS);
- Measurement and adjustment block;
- Flare unit (FU);
- Automated Process Control System with control unit and motor control center;
- Chemical injection pump (CIP) (optional);
- Oil/condensate buffer vessels (OBV) and water buffer vessels (WBV) with draw off pumps P-1,2 and loading system LS-1,2 (optional);
- Diesel power plant unit (optional).



## » North Seeking Gyro

Our Solid-State North Seeking Gyro (SSNSG) tool is the most advanced in the industry, using the latest dynamically tuned gyro technology. The tool is also one of the smallest diameter tools available on the market, enabling it to be used in any wellbore survey application and at any temperature, and making it the most flexible tool on the market today. Advanced software calibration techniques and an easy-to-use application software interface combine to make our tool one of the most accurate and flexible in the market today.

- **Multi-Shot Gyro**
- **Single-Shot Gyro**
- **Drop-Mode Gyro**
- **Gyro-While Drilling**





## » Dewaxing

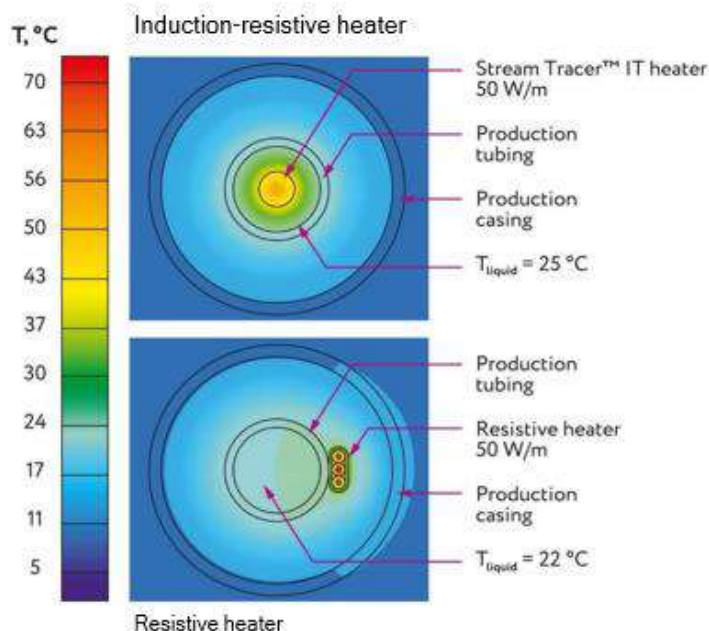
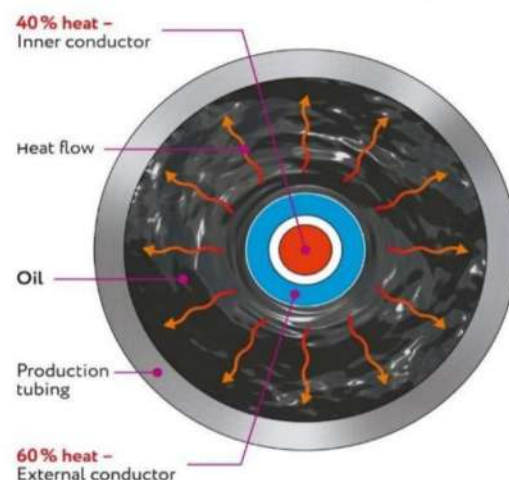
**Stream Tracer™** — an integrated solution for preventing wax deposition in oil wells. The smart heater adjusts the power output along the depth of the well compensating the heat loss of the fluid in precise zones. **Advantages of heater:**

- Improved heat distribution
- Absence of overheating zones
- Reduced heat load
- Increased service life

### Stream Tracer™: Business Benefits

- Production costs reduced by 50%
- Fewer emergency repairs
- Reduced equipment downtime
- Better field performance
- Quick and easy implementation
- Eco-friendly
- Automatic operation
- Easily transportable

Cross section of oil well tubing with a heater placed inside



Stable and trouble-free operation of the well without paraffin-wax precipitates

StreamTracer™ – Energy-Efficient Operation Of Oil Wells



# COILED TUBING

Be it applications including drilling operations, hydraulic fracturing, well completions, removing sand or fill from wellbore, and other applications that involve pumping fluids at high temperatures and high salinity, Ashbard Energy provides value added services

- **Deliquification**
- **Pumping**
- **Logging and Perforation**

**At Ashbard we ensure:**

- Deployment and retrievability .
- Ability to work with surface pressure present
- Minimized formation damage
- Reduced service time.
- Increased personnel safety
- Highly mobile and compact..
- Existing completion tubulars remaining in place,
- Ability to perform continuous well-control operations,

# VALVES

# 16

Ashbard is one of the leading Nigeria service provider with a fully equipped and deployment – ready team that clients can trust for their entire valve repairs and testing when cost optimization and efficiency is a priority.

- **Supply**
- **Calibration**
- **Installation**
- **Repair & Maintenance**
- **Training**



**Port Harcourt:** 18a Chief Nwuke Street, Trans Amadi, Ind Layout PHC. Rivers State, Nigeria.  
**Lagos:** 3rd Floor Mulliner Towers 29 Alfred Rewane Road Ikoyi, Lagos State Nigeria.  
[info@ashbardenergy.com](mailto:info@ashbardenergy.com), [businessdevelopment@ashbardenergy.com](mailto:businessdevelopment@ashbardenergy.com)  
[www.ashbardenergy.com](http://www.ashbardenergy.com): **Tel:** 08036742534, 09081438222, 09081402333





# » NON DESTRUCTIVE TESTING SERVICES (NDT)

# 17

Our vast expertise and knowledge in NDT and materials testing means we can select the right techniques and procedure to detect and irregularities in your products ,equipment, production facilities or plant assets and provide you with necessary data to assist you in making informed decisions.

We have the vision to lead in delivering quality inspection, for the Oil and Gas and Manufacturing Sectors of the economy. . We have trained, certified, competent and experienced QAQC inspectors in, Advanced Non-Destructive Testing,



- Ultrasonic inspection
- Magnetic particles Inspection
- Visual Thread Inspection
- Visual Inspection of pipe body
- Internal and External Cleaning
- API Drift (Full length)
- Coating
- Tallying & Racking
- EMI
- Long Range Ultrasonic Testing (LRUT)
- Pulsed Eddy Currents (PEC)
- In-Service Flange Face Corrosion Detection - PAUT
- Lamination Checks – PAUT
- LRUT Level 3 Consultancy Services



**RIGHT INSPECTION SERVICES (RIS)**

**A SUBSIDIARY OF ASHBARD ENERGY COMPANY LIMITED**

# CORROSION MONITORING (INTEGRATED / INTERNAL CORROSION SYSTEMS)

Ashbard Energy provide corrosion monitoring and control services with product portfolio comprises special coatings for corrosion protection, highly advanced leak protection systems, sealing products, impregnations, and much more. We have qualified and well trained personnel in this field readily available to render this services:

## INTERNAL CORROSION MONITORING

- Online retrieval /Side stream corrosion rate analysis & chemical optimization
- Coupon Analysis/ Data Logging & Interpretation
- Corrosion monitoring system audits
- Hot-tapping(new access fittings)
- Project management /Training/Comm

## EXTERNAL CORROSION MONITORING

- Washing(Pressure)
- Blasting
- Priming & Painting



# TANK CLEANING & REHABILITATION

19

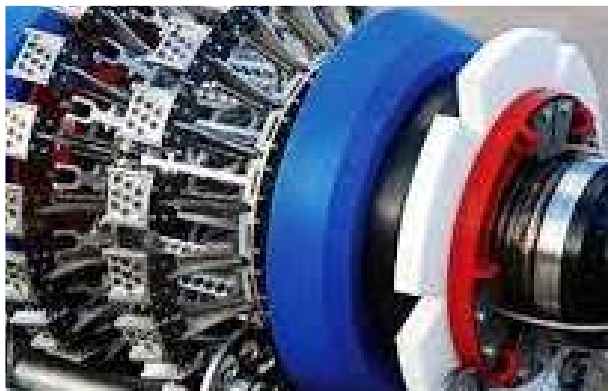
Ashbard can meet all your tank cleaning needs. Utilizing the most innovative equipment and processes in the industry, Ashbard will clean and gas free your tank in the safest and most cost-effective manner. Whether upstream production facilities, midstream, or downstream storagetanks, our professional staff with the help of our technical partners will be there to provide the service and support you need during aggressive turnarounds or tight maintenance schedules.



- No Man Entry Tank Cleaning Equipment
- Cleaning Liquids
- Mobile Sludge Treatment Units
- Conductive and non-conductive floor corrosion protections
- Mechanical reinforcement of steel floor with high performance laminates
- Outside surface sealing for secondary containments
- Internal double floor lining with the DOPA® technology
- Outside corrosion protection for C1-C5 environments
- Reinforcement of ring basements
- Spill prevention and spill response absorbent products



# INTELLIGENT PIGGING /PIPELINE SUPPORT



Ashbard offers excellent pigging services to cater for our clients pipelines. From exploratory pigging to lines with no pigging/inspection history, we couple gauge plates to foam pigs to carry out this service. Our pigging services also encompasses routine and aggressive cleaning using single module bidi and dual module mechanical pigs which could be with brush or magnet or a combination of the two to achieve a thorough cleaning run.



**Port Harcourt:** 18a Chief Nwuke Street, Trans Amadi, Ind Layout PHC. Rivers State, Nigeria.

**Lagos:** 3rd Floor Mulliner Towers 29 Alfred Rewane Road Ikoyi, Lagos State Nigeria.

[info@ashbardenergy.com](mailto:info@ashbardenergy.com), [businessdevelopment@ashbardenergy.com](mailto:businessdevelopment@ashbardenergy.com)

[www.ashbardenergy.com](http://www.ashbardenergy.com): **Tel:** 08036742534, 09081438222, 09081402333

## » PIPELINE SUPPORT

Ranging from pipeline procurement to installation, We at Ashbard are readily available to render value added services:

- **Engineering ,Procurement, Construction & Installation**
- **Pipeline/Piping Repairs**
- **Maintenance**





# PROCUREMENT SOLUTION

Ashbard offers procurement and supply services by a comprehensive framework of trade initiatives that ensure all clients' supplies, materials, equipment and services are procured at the highest quality, within the shortest time frame, through the safest route and at the lowest possible cost. We operate a healthy system of procurement and supply cycle that communicates clients' needs and ensures satisfaction and project efficiency throughout the entire cycle. Knowing procurement and supply remains a key part of the solution to major industry challenges; with our trade relationship with major OEMs, commitment is delivered through adoption of fast, agile and intelligent procurement and supply chain management operation that is sustained by continuous acquisition and analysis of current and future industry market data, global economic trends and execution of strategic sourcing techniques.







# TECHNICAL MANPOWER SERVICES



From project start-up to commissioning, Ashbard possesses the capacity to staff and manage clients' project operation with qualified personnel primed with the right skill set to effectively connect to project goals, ensure smooth operations and reduce risk of exposure.

On client request, be it at short notice, we supply unskilled to semi-skilled and skilled technical personnel, operational and managerial personnel and expat professionals capable of undertaking official positions onshore and offshore on a permanent or contract Basis

- **Semiskilled Personnel**
- **Skilled Personnel**
- **Operational Personnel**
- **Expat Professional**
- **Unskilled Personnel**
- **Managerial Personnel**

We have the required Recruiter License from the Federal Ministry of Labor and Productivity and manage a robust database of well-qualified and competent personnel. Our seasoned and active interactions with talents across the human capital landscape adequately positions us as a partner, client can rely on for all their human capital needs

**Port Harcourt:** 18a Chief Nwuke Street, Trans Amadi, Ind Layout PHC. Rivers State, Nigeria.

**Lagos:** 3rd Floor Mulliner Towers 29 Alfred Rewane Road Ikoyi, Lagos State Nigeria.

[info@ashbardenergy.com](mailto:info@ashbardenergy.com), [businessdevelopment@ashbardenergy.com](mailto:businessdevelopment@ashbardenergy.com)

[www.ashbardenergy.com](http://www.ashbardenergy.com): **Tel:** 08036742534, 09081438222, 09081402333

# RIG PROVISION SERVICES

Ashbard Energy offers modern and technologically advanced rigs designed for technically challenging conditions, through strategic alliances with a select group of world class rig owners as technical partners.

- **Land Rigs**
- **Conventional Rigs**
- **Jack up Rigs**



# DRILLING TOOLS AND EQUIPMENT

25

Successful way to oil & gas resources

- Rock cutting tools
- Workover and well Intervention tools
- Expanding tools
- Mud Lab





Ashbard has been demonstrating quality and improved repetitive business with all the NOCs, IOCs and marginal field operators some of which are here listed:

**TOTAL ENERGIES:** Calibration and Repair of Pressure Safety Valves, Provision of Corrosion Logging Services

**SPDC:** Provision of Tubular Inspection Services

**ELCREST:** Provision of Tubular Inspection Services

**SEEPCO:** Provision of Slickline Services, Reservoir Saturation & Oxygen Activation Logging

**NPDC:** Provision of Electric Wireline logging services- Reservoir Saturation Monitoring and Formation Evaluation using PNN (Pulse Neutron Neutron) Technology. (Onshore/Offshore)

**SAHARA GROUP:** Fabrication and Modification Works

**FRONTIER:** Provision of Gyro Services

**BGT:** Recertification of Measuring Instruments

**NDPR:** Provision of Electric Wireline logging services- Provision of Reservoir Saturation Monitoring and Formation Evaluation using PNN (Pulse Neutron Neutron) Technology

**AGIP:** Provision of Manpower, Operation and Maintenance of Mobile Oil Recovery

**MAERSK:** Provision of Gyro Services

**SEPLAT:** Procurement and Supply of Wellhead Spares

**AMNI:** Recertification of LACT Unit, Procurement Services, Well Testing

**AMW:** Provision of Well Integrity Services

**DANGOTE:** Provision of PSV/PRSV Calibration Services, Procurement Services

**PLATFORM:** Provision of Electric Wireline logging services- Well Integrity Services (Noise, Temp log)

**WELLTEC:** Provision of Instrument Calibration Services

**SAIPEM:** Supply of Raw Materials for Pipe Support – MTO1 EPC for BONNY NLNG T7 Project

**ENAGEED:** Modification of The Inlet and Outlet Spool from The Metering Skid To The Prover Loop On Ordeo LACT Unit

**GREEN ENERGY:** Inspection and Non-Destructive Testing (NDT) Of PEPF Equipment At Otakikpo Marginal Field, Procurement of Measuring Instruments.

**ALL GRACE ENERGY** – Procurement of Ubima EPF Instrument Gauge

**And a lot more NOC's and Marginal field companies.**

# PARTNERS /OEM /AFFILIATIONS

*pnnPlus*

**NORTHSTAR**  
DOWNHOLE SPECIALISTS

 **OZNO**  **BRACE TOOL**

 **Taylor Valve Technology**  **KLINGER**  
trusted. worldwide.

**WOLFTANK**

 **SST GROUP**

 **adisa**

# OUR CLIENTS

 **Nigeria LNG Limited**

 **TOTAL**

 **NESTOIL**

 **SAIPEM**

 **AIR LIQUIDE**

 **HYUNDAI**  
HEAVY INDUSTRIES CO., LTD.

 **HILONG**

 **NPDC**

 **Shell**

 **ALPHA**

 **SINOPEC**

 **FIPL**

 **DANGOTE**  
FERTILIZER

 **DRILLOG PETRO-DYNAMICS LIMITED**

 **frontie**  
oil limitec

 **GEIL**  
GREEN ENERGY INTERNATIONAL LIMITED

 **Elcrest**  
E & P Nigeria Ltd.

 **Agip**

 **PONTICELLI**



## CONTACT US

### 📍 Port Harcourt Office:

18A, Chief Nwueke Street,  
Trans-Amadi, Port Harcourt,  
Rivers State, Nigeria.

### 📍 Lagos Office:

3rd Floor, Mulliner Towers,  
39, Alfred Rewane Road,  
Ikoyi, Lagos, Nigeria.

☎ **+234 803 6742 534,  
+234 9081 420 999**

✉ **info@ashbardenergy.com**  
✉ **businessdevelopment@ashbardenergy.com**  
🌐 **www.ashbardenergy.com**  
🏢 **Ashbard Energy Company Limited**